

THE CAPE PLAYHOUSE

WHERE BROADWAY GOES TO SUMMER. SINCE 1927



JUNE 25 - JULY 12 | 2025

DENNIS VILLAGE | CAPE COD, MA

COMMITMENT. QUALITY. INTEGRITY.



PHOTO CREDIT: LARA KIMMERER

CAPE COD'S
LEADING CUSTOM BUILDER™

Cape Associates, Inc.
CUSTOM BUILDERS
EST. 1971
PROPERTY MANAGEMENT | SERVICES | PAINTING
WWW.CAPEASSOCIATES.COM





On behalf of the Cape Cod Center for the Arts Board of Trustees, I thank you for joining us at The Cape Playhouse, America's oldest continually operating summer theater.

Even before the end of a very successful 2024 season, our Board and management team had begun preparing for this year. Artistic Director Eric Rosen conceived this extraordinary season and also established a new apprentice program designed to educate the next generation of theater professionals. Our Board took steps to acquire property that is being used to house visiting artists this year and, we expect, for decades to come. Executive Director Nora Carey led efforts to prepare the residence at the same time she is spearheading myriad improvements to the Playhouse that will begin this Fall. We also are pleased to announce that Harold Wolpert, a nationally respected leader in arts administration, has joined us as the Playhouse's Interim Managing Director.

We have so many people to thank: directors, choreographers, musicians, designers, technical and production crews, and our year-round staff—all coming together to support exceptional professional actors who bring unforgettable stories to life on our stage.

Finally, we shine the Playhouse spotlight on you, our patrons... those who have been subscribers for decades, those who have been with us in recent years, and those who are with us for the first time. We are grateful to you for filling our pews and inspiring our efforts. We also give thanks to our benefactors—you will find their names elsewhere in this program—whose generosity has been essential in preparing this memorable season.

Thank you for joining us this summer. You are the reason we are here. Everything we do is in the hope that you will be inspired by this performance and will want to return to see what wonderful theater we have in store for you next.

With sincerest gratitude that you are part of our Cape Playhouse community,

Linda DeRuvo-Keegan
President, Board of Trustees, Cape Cod Center for the Arts, Inc.

OFFICERS & TRUSTEES OF THE CAPE COD CENTER FOR THE ARTS, INC

Linda DeRuvo-Keegan, President | Robert Burns, Vice President
Dennis Corcoran, Vice President & Treasurer | Jack Yunits, Vice President & Secretary
William Templeton, Immediate Past President | Cheryl Bartlett | Kathryn Dunford | William Harpin
Andrew House | Maryanne Knott | Paul Lambert | Laura Toy

ENJOY OUR PLENTIFUL INDOOR & OUTDOOR SEATING

Nothing Tops Our Homemade Ice Cream

...except cherries & sprinkles
or hot fudge or butterscotch
or mixed nuts or whipped cream!



HOMEMADE PREMIUM ICE CREAM

Homemade Waffle Cones

Hard & Soft Serve

Frappes • Gelato

Ice Cream Cakes

Also Panini's & Soups

Hyannis Location Only



**THREE
LOCATIONS!**



HYANNIS

645 Iyanough Rd / Route 132

508-568-3600

also at:

Ocean Street Hyannis
on the docks at Hyline

DENNIS

716 Main Street, Route 6A

508-385-2800

SOUTH YARMOUTH

5 Theatre Colony Rd / Rte 28

508-398-8400

www.capecodcreamery.com

ABOUT THE CAPE PLAYHOUSE: 1927 - 2024

In 1924 a 25-year-old painter and playwright emerged onto the Cape Cod theatre scene. His name was Raymond Moore. After staging one of his productions in Provincetown and managing a makeshift theatre, he began searching for a site to establish a professional summer playhouse. In Dennis Village, Moore found what he was looking for.

He purchased three-and-a-half acres of land along the Old Kings Highway, moved an abandoned 19th century meeting house to the site, converted it into a theatre, and on July 4, 1927, the curtain rose for the first time on *The Guardsman*, starring Basil Rathbone and Violet Kemble Cooper. On that rainy night, Moore's vision of bringing Broadway-caliber theatre to Cape Cod was realized.

A mere three years later, in 1930, Moore introduced the second phase of his vision for an arts haven at the center of Cape Cod with the Cape Cinema. Designed by architect Alfred Easton Poor and decorated with a 6,400 square foot ceiling mural by painter and illustrator Rockwell Kent - considered at the time "the most beautiful talking picture theater in America." Prior to his untimely death in 1940, Moore also indulged his passion for horticulture and the Playhouse grounds were a destination for garden enthusiasts.

Today, the Cape Playhouse, its associated buildings, and the Cape Cinema building are owned by the Cape Cod Center for the Arts (CCCA). Established as a non-profit organization in 2005, the CCCA remains dedicated to the education and benefit of the public through the promotion and fostering of theatrical and cinematic arts - continuing in Raymond Moore's grand vision.

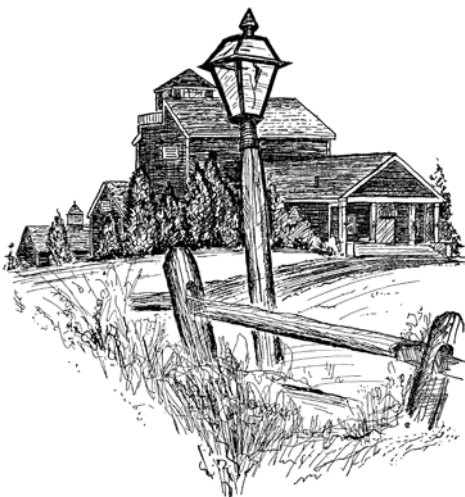


TABLE OF CONTENTS

Letter from the Board President	1
About The Cape Playhouse.	3
Table of Contents.	3
Letter from our Artistic Director	4
Title Page	5
Setting and Cast	7
Musical Numbers	9
Who's Who in the Cast	11
Up Next at The Cape Playhouse.	17
Front Row Fridays	18
Who's Who on the Staff.	29
Apprentice Program.	30
Playhouse Palooza	32
Letter from our Executive Director	34
Donor Recognition & Partners.	35
Become a Member	39
The Cape Playhouse Theatre School	42
Corporate, Foundation & Government Funders	43
Things to Know	44

FROM OUR ARTISTIC DIRECTOR



Hope is the last thing to escape from Pandora's box, you'll recall, and that's an important metaphor in thinking about the Cape Playhouse's Season of Hope.

We borrowed the moniker from the iconic song in RENT, now a staple of our culture, about the 525,600 minutes in a year, which felt apt in thinking about a season that has taken at least that long to develop and launch. But as most stories in the theater involve love, they almost equally tell stories about hope in moments of tremendous adversity.

It's not an accident that all five of our shows – BUDDY, RENT, ANASTASIA, COME FROM AWAY, and JOAN - depict great moments of change over the last century - from the Russian revolution to 9/11, from the HIV/AIDS crisis in New York to the shores of Newfoundland to pre-war Paris, from the rise of a comedy legend who turned tragedy to laughter to the tragic loss in rock and roll history that became known as the "Day the Music Died." If that doesn't sound like the heart of a summer season of four musicals and a comedy, that's thanks to what Pandora saved for last, and what great theater can give us: hope.

For nearly a century, the Cape Playhouse has been a part of hundreds of thousands of Cape residents and visitors' summer traditions, and we are proud to carry that forward with you and your family this season. In these challenging times, I hope that you feel deeply the hope that comes when adversity threatens to overwhelm us – and the way that musicals and comedies turn that adversity into something exhilarating, powerful, entertaining and enervating.

Last summer was my first season as Artistic Director. I loved how this old theater vibrated with powerful life as the best artists in New York met one of the greatest and most enthusiastic audiences I've ever encountered. This summer, I am so happy to share these five remarkable stories, told by some of the best artists in the business. We aim to bring the unique and essential feeling that live theater can create, in one of the most magical places in the world. Now more than ever, we should call that feeling, simply: hope.

Thank you for being the heart of what makes the Cape Playhouse so incredibly special, generation after generation.

A handwritten signature in black ink, appearing to read "Eric Rosen".

Eric Rosen
Artistic Director

THE CAPE PLAYHOUSE

at the Cape Cod Center for the Arts

Artistic Director
ERIC ROSEN

Interim Managing Director
HAROLD WOLPERT

Executive Director
NORA CAREY

Presents

RENT

Book, Music and Lyrics by
JONATHAN LARSON

Musical Arrangements
STEVE SKINNER

Original Concept/Additional Lyrics
BILLY ARONSEN

Musical Supervision and Additional Arrangements
TIM WEIL

Dramaturg
LYNN THOMSON

Starring

JORDAN BARROW* **ASHLEY BLANCHET*** **TSILALA BROCK*** **GABE CRUZ**
TERRANCE L. JOHNSON* **SARAH KLEIST*** **DILLON KLENA*** **STORM LEVER***
OLIVIA LONDON* **CHRIS MCCARRELL*** **NEEMA MUTETI***
JACKSON KANAWHA PERRY* **JON RODÉZ*** **FRANKIE RODRIGUEZ***

Set Designer
BRITTON MAUK

Costume Designer
NIA SAFARR BANKS

Lighting Designer
KAT C. ZHOU

Sound Designer
LAWRENCE SCHOBER

Projection Designer
MICHAEL SALVATORE COMMENDATORE

Wig Designer
BOBBIE ZLOTNIK

Fight and Intimacy Coordinator
TENIECE DIVYA JOHNSON

Production Stage Manager
EITAN MARKOWITZ*

Assistant Stage Manager
EMILY KLUGER*

Associate Scenic Designer
CHRISTINA J. GARNER

Associate Costume Designer
ANDREW WEHLING

General Manager
BRYNN GRAMBOW

Production Manager
ALI FARINA

Technical Director
KRISTEN GARZA

Company Manager
SHAYLA DICKERSON

Casting

STEPHANIE KLAPPER, CSA

Music Director

TOM VENDAFREDDO

Directed & Choreographed by
CHIP MILLER

RENT was originally produced in New York
at New York Theatre Workshop and on Broadway
by Jeffrey Seller, Kevin McCollum, Allan S. Gordon
and New York Theatre Workshop

RENT

Is presented through special arrangement with Music Theater International (MTI).

All authorized performance materials are also supplied by MTI.

mtishows.com

Cape Cod
RETRACTABLE
Awnings-Screens-Shutters

AWNINGS • RETRACTABLE SCREENS • HURRICANE
SHUTTERS • SOLAR SHADES • MOTORIZED SCREENS



At **Cape Cod Retractable Inc.** we offer fast, responsive and detail oriented service. Our staff is knowledgeable, trusting and insured.

508-539-3307 • sales@screensNshutters.com
9 Jonathan Bourne Drive Unit 2 Pocasset MA 02559
Hours: 8:00am - 5:00pm Monday - Friday

screensNshutters.com

CAST

(in alphabetical order)

Jordan Barrow* Benjamin "Beny" Coffin III
 Ashley Blanchet* Maureen Johnson
 Tsilala Brock* Joanne Jefferson.
 Gabe Cruz Gordon, The Man, Mr. Grey; u/s: Roger, Mark
 Terrance L. Johnson* Tom Collins
 Sarah Kleist* Alexi Darling, Roger's Mother, Sue, Cop, Vendor, Seasons of Love Solo; u/s: Maureen
 Dillon Klena* Mark Cohen
 Storm Lever* Mimi Marquez
 Olivia London* Mrs. Jefferson, Bag Woman, Coat Vendor, Mimi's Mother; u/s: Joanne
 Neema Muteti* Mark's Mother, Pam, Vendor, Cop; u/s: Mimi.
 Jackson Kanawha Perry* Steve, Waiter, Squeegee Guy; u/s: Angel, Benny; Dance Captain
 Chris McCarrell* Roger Davis
 Jon Rodéz* Mr. Jefferson, Carolor, Paul, Preacher; u/s: Collins
 Frankie Rodriguez* Angel Dumot Schunard

SETTING

New York City's East Village, specifically in the area of Alphabet City. The story unfolds over one year, from Christmas Eve 1989 to Christmas Eve 1990.

RENT RUNS TWO AND A HALF HOURS INCLUDING ONE INTERMISSION

Any video and/or audio recording of this production is strictly prohibited.



The Cape Playhouse is a professional theatre employing members of Actors' Equity Association, the union of Professional Actors and Stage Managers in the United States.



The Director and Choreographer are members of the THEATRICAL DIRECTORS AND CHOREOGRAPHERS SOCIETY, a national non-profit organization.



The Designers at this Theatre are represented by United Scenic Artists - Local USA 829 of the International Alliance of Theatrical Stage Employees

* Member of Actors' Equity Association.



Ring Bros.
 Marketplace

**LOCAL MARKET
 LOCAL TASTE**

485 Route 134, South Dennis



ELDRED'S

AUCTIONEERS • EST. 1947

*Folk art portrait
attr. Deacon Robert Peckham,
Worcester, Mass., 1785-1877*

UPCOMING AUCTIONS

- JULY 10 Summer Living
- JULY 22-25 Americana Week
- AUG 7-8 The Marine Sale
- AUG 13 Cape Cod + Contemporary Art
- AUG 14 Jewelry + Couture

Open weekdays from 8:30 to 4:30. Quality consignments always accepted.
1483 ROUTE 6A, E. DENNIS | 508-385-3116 | ELDREDS.COM

MUSICAL NUMBERS

ACT I

TUNE UP/VOICE MAIL #1	Mark, Roger, Mr.s Cohen, Collins, Benny
RENT	Company
YOU OKAY HONEY?	Angel, Collins
ONE SONG GLORY	Roger
LIGHT MY CANDLE	Roger , Mimi
VOICE MAIL #2	Mr. & Mrs. Jefferson
TODAY 4 U	Angel
YOU'LL SEE	Benny, Mark, Collins, Roger, Angel
TANGO: MAUREEN	Paul, Gordon, Company
LIFE SUPPORT	Mimi
OUT TONIGHT	Roger, Mimi, Company
ANOTHER DAY	Company
WILL I?	Company
ON THE STREET	Company
SANTA FE	Collins and Company
WE'RE OKAY	Joanne
I'LL COVER YOU	Angel, Collins
CHRISTMAS BELLS	Company
OVER THE MOON	Maureen
LA VIE BOHEME / I SHOULD TELL YOU	Company

ACT II

SEASONS OF LOVE	Company
HAPPY NEW YEAR / VOICE MAIL #3	Mimi, Roger, Mark, Maureen, Joanne, Collins, Angel, Mrs. Cohen, Alexi Darling, Benny
TAKE ME OR LEAVE ME	Maureen, Joanne
WITHOUT YOU	Roger, Mimi
VOICE MAIL #4	Alexi Darling
CONTACT	Company
I'LL COVER YOU (REPRISE)	Collins, Company
HALLOWEEN	Mark
GOODBYE, LOVE	Mark, Mimi, Roger, Maureen, Joanne, Collins, Benny
WHAT YOU OWN	Pastor, Mark, Collins, Benny, Roger
VOICE MAIL #5	Roger's Mom, Mimi's Mom, Mr. Jefferson, Mrs. Cohen
FINALE / YOUR EYES	Roger, Company

ORCHESTRA

Conductor/Keyboard 1: Tom Vendafreddo
Keyboard 2/Guitar: Beto Gonzalez
Guitar: William Buonocore
Bass: Nicholas Francese
Drums/Percussion: Doug Lippincott



The Village at Thirwood Place

Active Living in a Spacious, Beautiful Surrounding

The Village at Thirwood Place includes 28 exclusive townhome-style residences nestled in the woods next to Flax Pond. Ranging from 1,300 to 1,700 square feet, these make downsizing an easy choice! Residents enjoy golf privileges at Blue Rock Golf Course, flexible dining options, weekly housekeeping, and more.

To learn more about the active lifestyle at Thirwood Place, visit us online at ThirwoodPlace.com or stop by and join us for a casual tour.

Thirwood
PLACE



237 North Main Street
South Yarmouth, MA 02664
(508) 398-8006

ThirwoodPlace.com

WHO'S WHO IN THE CAST



JORDAN BARROW* (Benjamin “Benny” Coffin III) Cape Playhouse debut! Barrow made history as the first Black actor to play ‘Boq’ in *Wicked* in North America. New York: *Love Life* (NY City Center Encores!), *The Tempest* (Shakespeare in the Park). Other credits: *Rent*, *Peter Pan*, *The Miracle Worker* (Paper Mill), *Sousatzka* (Elgin Theatre), *America V2.1...* (Barrington Stage), *Witness Uganda* (Wallis Annenberg). TV: “Pose” (FX), “Broad City” (Comedy Central), “Amy and Peter are Getting Divorced”. University of Michigan Graduate. Thanks to my family, friends,

DGRW, and Artists First! @jordant_b | www.jordan-barrow.com



ASHLEY BLANCHET* (Maureen Johnson) So excited to be at Cape Playhouse this season!! Broadway credits include *Waitress* with Sara Bareilles (Dawn), *Frozen*, *Beautiful* (ACCA Award), *Annie* (Star to Be), and *Memphis*. Select Regional: Belle in *Beauty and the Beast* (St Louis MUNY), Maria in *The Sound of Music* and the title role in Rogers and Hammerstein’s *Cinderella* (Paper Mill Playhouse), and Kate Mullins/Charlotte Cardoza in *Titanic* at CityCenter Encores!. Film/TV: “The Good Fight”, “The Equalizer”, “WonderPets”, “Noggin123”, “Better

Nate Than Ever”, and Raquelle in the short animated film “Are You Okay?” by WonderMedia. Follow her on IG: @a_Blanchet!

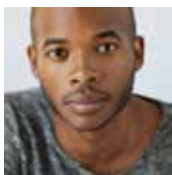


TSILALA BROCK* (Joanne Jefferson) The Cape Playhouse debut! Tsilala recently made her Broadway debut in the Tony Award-winning musical *Suffs* as Dudley Malone. National Tour: *Book of Mormon*. Select Regional Theater: *Blues for an Alabama Sky* (Barrington Stage), *Parable of the Sower* (SIFA, NYUAD), *Satchel Paige and the Kansas City Swing* (Cincinnati Playhouse, St. Louis Rep), *Twelfth Night* (Martha’s Vineyard Playhouse). TV/Film: “Brooklyn Love Stories” Dir. Brian Shoaf, “Mysteries of Laura” (NBC), “Happyish” (Showtime), “Broad City” (Comedy

Central). Carnegie Mellon University Alum. A proud Bermudian-American storyteller. Repped by Saks& and Nicolosi & Co. Find more at tsilala.com.



GABE CRUZ (Gordon, The Man, Mr. Grey; u/s: Roger, Mark) is so excited to be making his Cape Playhouse debut in *Rent!* He is a junior Musical Theatre major at Pace University in New York City. Some of Gabe’s past shows include *Rent* (Roger), *Carrie* (Tommy), and *Frozen* (Hans) at the John W. Engeman Theatre, along with *Rock of Ages* (Drew), *Spring Awakening* (Melchior), and others with Raffaele Productions. Thank you to Gabe’s friends and family for their endless support!



TERRANCE L. JOHNSON* (Tom Collins) is overjoyed to be reprising his dream role at The Cape Playhouse! His performance credits include: *Rent* (Collins) The Muny; *Rent: In Concert* (Collins) The Kennedy Center; *Rent* (Collins) Paper Mill Playhouse; *Bhagin’ It* (Jake) La Jolla Playhouse; *Dreamgirls* (C.C. White) National/International Tour; & *Once On this Island* (Ti Moune) FIPAP. He sends much love to his friends & family for their unending support! Socials @TerranceLJohnson



SARAH KLEIST* (Alexi Darling, Roger’s Mother, Sue, Cop, Vendor, Seasons of Love Solo; u/s: Maureen) is thrilled to be making her Cape Playhouse debut! Favorite credits: *Kinky Boots* (North Shore Music Theatre, Theatre by the Sea), *Heathers* (WPPAC), *Whitney Houston’s The Bodyguard* (WPPAC), *Little Black Book* (Bowery Ballroom). Film: *ADAM* (Sundance/Outfest). Sarah has also contributed her vocals to numerous cast recordings and albums released by Broadway Records, collaborating with some of Broadway’s brightest stars. When

not performing, Sarah runs a thriving brand and website design studio serving creative professionals and entrepreneurs. IG: @sarahkleist, Website: sarahkleist.com.

Pocket Full of Posies

a baby and children's boutique  7 Wianno Ave, Osterville MA



www.pocketfullofposies.com

embroidery  personal shopping  gift wrapping



DILLON KLENA* (Mark Cohen) is excited to be making his Cape Playhouse debut! Credits include: *Jagged Little Pill* (1st National Tour), *Rutka: A New Musical* (World Premiere @ Cincinnati Playhouse), *Newsies* (Musical Theatre West), *Mamma Mia!* (McCoy Rigby Entertainment), *Story of My Life* (Chance Theater), *Spring Awakening* (Malibu Playhouse), *Disney's The Little Mermaid* (OBCT), *Children Of Eden* (CSUF), *The Hunchback Of Notre Dame* (Fox Theater). Readings/Workshops: *Starry*, *SAT*. Special thanks to Robert Stein and Natalie

Kollar with LA Talent, for this amazing opportunity and much love to his family and friends for their constant and impactful support! Instagram: @dillon_scott_klena



STORM LEVER* (Mimi Marquez) BROADWAY: Anne Boleyn in *Six*. Duckling Donna in *The Donna Summer Musical*. 1st NATIONAL TOUR: Anne Boleyn in *Six*, Duckling Donna in *The Donna Summer Musical*. OFF-BROADWAY: Dorothy in *The Winger* (City Center). REGIONAL: Sheila in *Hair* and Poxelia in *Almost Famous* (The Old Globe); Wendy in *Fly* (La Jolla); Savannah in *Freaky Friday* (Signature Theater); *Emotional Creature* (Berkeley Rep). TV/FILM: "No One Called Ahead". Love to my Christopher, my family, B.F.A.mily @ the University of

Michigan and BRS/Gage. @stormlever



OLIVIA LONDON* (Mrs. Jefferson, Bag Woman, Coat Vendor, Mimi's Mother; u/s: Joanne) is Over the Mooooooon to be back at Cape Playhouse! She is an LA native and graduate of the UCLA Ray Bolger Musical Theater Program. GO BRUINS! Favorite credits include: *Waitress* (Cape Playhouse/Arts Center of Costal Carolina), *Midsummer Night's Dream* (Classical Theater of Harlem), *The Cake* (Cape Fear Regional Theater), *Beehive: The 60's Musical* (Totem Pole Playhouse), and *Something Rotten* (Florida Studio Theater). To all my friends and

fam, it truly takes a village. And to YOU reading this, you are loved! Follow Olivia on socials! @loveelivvy



CHRIS MCCARRELL (Roger Davis) Broadway: *The Lightning Thief: The Percy Jackson Musical* OBC (Percy), *Les Misérables* 2014 OBC (Marius). Television: "Peter Pan Live!" (NBC), "The OA" (Netflix), "The Blacklist" (CBS). Other Theatre (Select): Originated Peter in *Prelude to a Kiss, a Musical* (Milwaukee Rep/South Coast Rep), Anatole in *Great Comet of 1812* (Great Lakes Theater), Joseph in *Joseph and the Amazing Technicolor...* (La Mirada), Anthony in *Sweeney Todd* (Kansas City Rep), Gilbert in *Anne of Green Gables* (The REV), Bubble Boy

in *Bubble Boy* (American Theater Group), Hermie in *Summer of '42* (Bucks County), Gabe in *Next to Normal* (Beck Center). Love to Mom and Dad!



NEEMA MUTETI* (Mark's Mother, Pam, Vendor, Cop; u/s: Mimi) is currently receiving her BFA in Musical Theatre from the University of Southern California, class of 2026. Recent credits: Extraordinary Girl - *American Idiot* (workshop w/ Center Theatre Group + Deaf West), Mimi - *Rent* (USC), Atina - *The Little Mermaid* (McCoy/Rigby Entertainment), Ensemble - *Reefer Madness LA Revival*. In her spare time, Neema loves forcing her friends to tap dance with her and reading Percy Jackson books. Thank you Mom, Dad, Allan, Alfred, and Noelle for your love

and support! All Glory to God <3 Insta: @neema.muteti



JACKSON KANAWHA PERRY (Steve, Waiter, Squeegee Guy; u/s: Angel, Benny) is grateful for this opportunity. He was in the world premiere of *The Karate Kid: The Musical*, and select other credits include Ogunquit Playhouse, The Apollo Stages, Theatre Q Asbury. Up next, you can catch him as Raymond in the world premiere of *Saturday Church* at New York Theatre Workshop. He has a BFA in Musical Theatre from the University of Michigan (2024) and a UNCSA High School Drama diploma. Glory to God, and special thanks to his team at Henderson Hogan

Agency, family, and friends. www.jacksonperry.com | @jk.perry



JON RODÉZ* (Mr. Jefferson, Carolor, Paul, Preacher; u/s: Collins) is delighted to make his Cape debut and to represent his hometown, the Lower East Side! Some favorite credits include: *In The Heights* (Piragua/Usnavi u/s), *Spring Awakening* (Georg) and *Bring It On* (LaCienega). Coming up next, Jon travels to Sacramento to the eminent Broadway Music Circus to take on the role of Piragua Guy in *In The Heights*—the show that keeps on giving. When not on stage, Jon content creates on social media as his witty and fun alter-ego-auntie, @TabithaSkyAlmonte.

Endless love to Mom and Jai, his forever queens. @thejonrod



FRANKIE RODRIGUEZ* (Angel Dumot Schunard) is best known for playing Carlos in the hit Disney+ show “High School Musical: The Musical: The Series.” Rodriguez has also appeared in “The Sex Lives of College Girls” (HBO Max), “Bunk’d” (Disney Channel), “Will & Grace” (NBC), and “Modern Family” (ABC). This fall Frankie will star as Danny in the Hulu sports comedy “Chad Powers” opposite Glen Powell. Select Theatre: *Rent: In Concert* (Angel), *The Last Time I Saw Calligh* (Max), and *Calvin Berger* (Calvin). IG: @frankiearodriguez

CHIP MILLER (Director/Choreographer) is a director and producer, currently in the role of Associate Artistic Director at Portland Center Stage at the Armory. They were previously the Artistic Associate / Resident Director at Kansas City Repertory Theatre. Directing: *The Brothers Size*, *The Light*, *Sweeney Todd: The Demon Barber of Fleet Street*, *Clyde’s* (co-production with Syracuse Stage) *Liberace & Liza: Holiday at the Mansion* (A Tribute), *Choir Boy*, *It’s a Wonderful Life*, *RENT*, August Wilson’s *Gem of the Ocean*, *Hedwig & The Angry Inch*, the world premiere of *Redwood* (PCS), Larry Owens’ *Sondheimia* (Carnegie Hall), *Journeys to Justice* (Portland Opera), the world premiere of *American Fast* (Artists Repertory Theater), *School Girls; or, The African Mean Girls Play*, *Welcome to Fear City*, *Sex with Strangers*, *A Raisin in the Sun* (KCRep); the world premiere of *Becoming Martin* by Kevin Willmott (The Coterie); *dwb: driving while black* (Lawrence Arts Center, Des Moines Metro Opera, Greensboro Opera); *4:48 Psychosis* (The Buffalo Room). Chip has developed work with playwrights including Kevin Willmott, Kara Lee Corthron, Brittany K. Allen, Catherine Trieschmann, Darren Canady, Andrew Rosendorf, Susan Kander & Roberta Gumbel, Michelle T. Johnson, and Michael Finke. They have developed work at The William Inge Theatre Festival, NYU’s New Plays for Young Audiences, La Jolla Playhouse’s DNA Series, Portland Center Stage’s JAW Festival, The Midwest Dramatists Center, KCRep’s OriginKC New Works Festival, The Colorado New Play Summit, The Living Room Theatre, and Musical Theatre Heritage.

BRITTON MAUK (Set Designer) is an experienced scenic designer in regional theater, with designs for Portland Center Stage, including *Hedwig and the Angry Inch*, *Sweeney Todd*, *Rent*, and *Clyde’s*. He has worked with Indiana Repertory Theatre on *The 25th Annual Putnam County Spelling Bee* and Long Wharf Theatre on *I Am My Own Wife*. Notable designs at Syracuse Stage include *Clyde’s* and productions at CATF, Gulfshore Playhouse, and Resident Ensemble Players. In Pittsburgh, he contributed to world premieres at City Theatre and Pittsburgh Playhouse. Britton is also a mentor and advocate in the theater community, serving as co-coordinator for the USITT Gateway Program. For more information, visit brittonmaukdesign.com.

NIA SAFARR BANKS (Costume Designer) is a Costume Designer from Richmond, Virginia. Her design work has been seen in various productions, including *William Shakespeare’s Hamlet* at American Shakespeare Center, *August Wilson’s Fences* at Shakespeare and Company, and *Self Portrait* (Deluxe) at The Bushwick Starr. She received her Master of Fine Arts in Costume Design from Boston University in 2023, and her Bachelor of Fine Arts from Virginia Commonwealth University in 2019. She has been nominated for two Richmond Critic Awards for her outstanding work in Costume Design, for both *An Octoroon* (2019) and *A Christmas Kaddish* (2022).

KAT C. ZHOU (Lighting Designer) is an NYC-based lighting designer working primarily in theater, dance, and opera. CAPE PLAYHOUSE: *Waitress*, *Buddy*. OFF-BROADWAY: *The Magic of Light* (La MaMa), *See What I Wanna See* (Out of the Box Theatrics). REGIONAL: *The Heart Sellers* (The Guthrie & Huntington Theater Company), *The Thanksgiving Play* (Oklahoma City Repertory), *Then We’ll Rest* (Isle Theater Company), *Wipeout* (Gloucester Stage Company), *Sweeney Todd* (Moonbox Productions), *Wild Goose Dreams* (Speakeasy Stage Company). They received an MFA from Boston University and an AB in mathematics from Harvard College. More info: katzhoudesign.com

LAWRENCE SCHOBBER (Sound Designer) Theatre: *Titanique* (NYC, West End, Montreal, Toronto, Paris, Sydney). *Rubalee* (Caborca Theatre), *My Onliness* (New Ohio), *The Conversationalists* (Bushwick

Starr), *The Golden Spike* (BRIC), *American Morning* (Prospect Theatre Co.), *Pillowtalk* (Victory Gardens), *PharmaBro* (Players Theatre), *Elf: The Musical* (CO Springs), *The Little Mermaid* (CO Springs), *A Night with Janis Joplin* (Le Petit Theatre). Associate Design: *A Wrinkle in Time* (Arena Stage), *DRAG! The Musical* (New World Stages), *Three Houses* (Signature Theatre), *Oratorio for Living Things* (Ars Nova), *A Prayer for the French Republic* (MTC, Broadway), *The Thanksgiving Play* (Broadway), *Death of a Salesman* (Broadway), *Macbeth* (Broadway) Training: Fordham University

MICHAEL SALVATORE COMMENDATORE (Projection Designer) Originally from Rhode Island and then lived in Chicago for 7 years, Michael currently lives in Massachusetts with his amazing wife, Katie, and their lovable cats, Sebastian and JJ. For over a decade, Michael has traveled around the country designing for theatre, opera, dance, installations and more at places such as the Goodman Theatre, Steppenwolf Theatre, Arizona Opera, The Repertory Theatre of St. Louis, Chicago Shakespeare Theater, The Public Theatre, Music Theatre Wichita, Portland Stage, Yale Repertory Theatre, Chicago Symphony Orchestra, and more. He also received a Jeff award for Best Projection Design in Chicago for his work in *It Came From Outer Space The Musical* at Chicago Shakespeare Theater. MFA in Design, Yale School of Drama. michaelcommendatore.com

BOBBIE ZLOTNIK (Wig Designer) is an NYC-based wig designer who is ecstatic to return to the Cape Playhouse this season; previous Cape credits include *Beautiful* (Gerty Award Winner), *Waitress*, *Ain't Misbehavin'*, *An American in Paris*, *Camelot*, *Baskerville*, *Jersey Boys*, and *Sense & Sensibility*. Off-Broadway: *Emojiland* (Drama Desk Nom.), *Ibsen's Ghost*, *Fairycakes*, and many more. Other regional: Gulfshore Playhouse, Sharon Playhouse, Pittsburgh CLO, Theatre Aspen, The Ordway, Tuacahn, Bucks County Playhouse, George Street, Syracuse Stage, Penguin Rep, The Lex and many more. Film/TV: "The Marvelous Mrs. Maisel", "The Gilded Age", "Getting Curious With Jonathan Van Ness".
www.BobbieZlotnik.com

TENIECE DIVYA JOHNSON (Fight and Intimacy Coordinator) is an Intimacy Director, Fight Director, Stunt Performer, and Movement Storyteller working across television, film and stage. The first Black and first non-binary intimacy director on Broadway with *Slave Play*, Teniece serves as a resolute advocate for a decolonized collaborative approach to art, Black intimacy, Kink and Queer representation. They are also the founder of BlackIntimacyConsentCollective.org, a community based educational organization around Black intimacy, consent and wellness. Some additional credits include *Paradise* on Hulu, *POSE*, *Lovecraft Country*, *Wu-Tang: An American Saga* on Hulu, *Barry Jenkins' The Underground Railroad*, *RAMY*, *Diarra* from Detroit, and *West Side Story* with Steven Spielberg. Off-stage sharing boundaries and empathy masterclasses with colleges, universities and corporations. @teniecedivyajohnson

EITAN MARKOWITZ* (Production Stage Manager) is honored to be returning to the Cape Playhouse for his fourth summer! His recent credits at the playhouse include: *Waitress*, *Jersey Boys*, *Murder on the Orient Express*, and *The Fantasticks*. He has also worked at The Actors Studio, AMT Theater, Company XIV, Gateway Playhouse, The Wild Project, and more! He is a graduate of Marymount Manhattan College and currently attending Pace University. He would like to thank his Cape family, Emily, Julie, Arthur, his friends, and family for all their love and support.

EMILY KLUGER* (Assistant Stage Manager) is thrilled to be spending her first summer here at The Cape! Based in NYC, some recent credits include: *You're A Good Man Charlie Brown* (Inside Broadway), *The Witness Room* (Bella Vita Entertainment), *DAVID* (AMT) and *Chasing Andy Warhol* (Bated Breath Theatre Co.) Much love and thanks to all her friends and family for their support, and especially to Eitan who has continued to be the ultimate teammate!

TOM VENDAFREDDO (Music Director) Cape debut! Jeff Award-winning music director with 20+ credits at Paramount Theatre (Chicago) as well as Signature (DC), Chicago Shakespeare Theatre, NYMF, Old Globe, Writers Theatre, Engeman, Argyle, TheatreSquared, Mason Street Warehouse, and more. Recipient of the 2020 Illinois Theatre Association's Award of Excellence in Professional Theatre. His album, *Marya Grandy and Tom Vendafreddo LIVE*, is available on all major streaming platforms. BM: Eastman School of Music. MFA: San Diego State University. Proud member of AFM and AEA. For Dad, Mickey, and anyone who struggles with mental illness. You are not alone. IG: tommytunes88

STEPHANIE KLAPPER, CSA (Casting Director) Is happy to be working once again with Eric Rosen, Ali, and the great team at the Playhouse. Stephanie Klapper Casting is an Independent Casting Group, known for limitless imagination and creativity on a wide range of award-winning projects. SKC's work is frequently seen on Broadway, Off-Broadway, regionally, internationally, on film, television, and streaming platforms. Stephanie, along with her exceptional team, is passionate about arts education, and is dedicated to continuing to expand and champion diversity, equity, and inclusion in the business.

ERIC ROSEN (Artistic Director) Eric Rosen is a director, writer, and producer whose work has been seen on and off-Broadway and in more than 100 productions across the country. He has been the Artistic Director of the Cape Playhouse since 2023, and previously held that post at Kansas City Repertory Theatre and Chicago's About Face Theatre, which he was also co-founded. His original musical *Venice*, written with Matt Sax (Best Musical of the Year, *Time*) premiered at Kansas City Rep and Center Theatre Group before being produced at the Public Theater, featuring Leslie Odum Jr. and Uzo Aduba. Its popular cast recording was released by Ghostlight and is available on all major platforms. His musical *Winesburg Ohio* won Chicago's Joseph Jefferson Award for Best New Musical and Philadelphia's Barrymore Award for Best Musical. His play *Dream Boy* won the Jefferson Award for Best Play and has been performed around the country. His production of *Clay* by Matt Sax inaugurated LCT3 at Lincoln Center Theater after productions at Center Theater Group and About Face/Lookingglass Theater in Chicago. He won the Hayes Award for Outstanding Direction for his production of Paula Vogel's *Indecent*. His acclaimed short film *Netuser*, starring Denis O'Hare, won laurels at several film festivals and was recently released on Tiny Scripted. He's currently at work on a new musical with composer Rodney Bush about the historic rivalry between Bram Stoker and Oscar Wilde, as well as a scripted series to be released on Audible. At About Face Theatre, he helped launch their celebrated Youth Theatre, a pioneering program for LGBTQ youth in 2000. This work has been recognized by numerous civic awards, including Chicago's LGBTQ Hall of Fame. Rosen is a graduate of UNC-Chapel Hill and holds a Ph.D in performance studies from Northwestern University. He lives in New York City with his husband, actor Claybourne Elder, and their young son Bo.

HAROLD WOLPERT (Interim Managing Director) is a visionary arts leader, teacher, and three-time Tony Award-winning executive with extensive experience driving growth, stability, and innovation in nonprofit theater. Recognized as one of the field's foremost strategists, most recently Harold (he/him) is the Founder and President of My Purple Crayon Advisors, which brings hands-on expertise to arts organizations of all sizes, helping them navigate challenges, plan boldly, and lead with integrity. He has served in executive leadership positions for the internationally-acclaimed Roundabout Theatre Company, Manhattan Theatre Club, Signature Theatre, and Alley Theatre, where he collaborated with preeminent theater artists on more than 250 Broadway, Off-Broadway, and regional theater productions, including three Pulitzer Prize and five Tony Award-winning works, West End and Venice Biennale productions, national tours, transfers and international collaborations, and filmed works. Harold's firm My Purple Crayon Advisors brings forward-thinking, actionable solutions for arts organizations across all stages of growth. Clients include Williamstown Theatre Festival, Cape Playhouse, Wilma Theater, McCarter Theatre Center, Jazz Houston, Miami New Drama, IndieSpace, Breaking the Binary Theatre, Ford's Theatre, and Goodspeed Musicals. Harold also has a long history as a teacher and mentor. Currently, he is on the faculty of Yale's David Geffen School of Drama where he has championed a new generation of arts leaders. His civic engagement and leadership in organizations supporting the LGBTQ+ community include volunteering for 10 years for The Trevor Project, the leading suicide prevention and crisis intervention nonprofit organization for LGBTQ+ young people and serving as Board Chairman of AIDS Foundation Houston. Originally from Philadelphia, and a graduate of the University of Pennsylvania, Harold lives in Brooklyn with his black cat, Joey, who (occasionally) serves as his (unreliable) assistant.

NORA CAREY (Executive Director) has over 30 years of management experience in non-profit, corporate, and public/private sectors with leadership roles in Business Development, Marketing & Communications, and Project Management. A long-term resident in Europe, yet a MA native, Nora launched her professional career in London – where she developed and implemented a successful Thames-side retail & restaurant strategy for Sir Terence Conran. Moving on to Paris, she was part of the opening team for Disneyland Resort Paris – responsible for the menu development of 27 themed restaurants and subsequently developed and managed a Creative Services department. Following her position with Disneyland Paris, Nora joined the Hotel Ritz in Paris as Marketing & Communications Director before returning stateside as the Director of the annual Epcot International Food & Wine Festival for five years. Other culinary adventures include the establishment of the non-profit *Bocuse d'Or USA* organization with chefs Daniel Boulud, Thomas Keller, and Jerome Bocuse and she served as the Executive Director of the Boston Public Market Association, collaborating with the Board of Trustees to develop the business plan for the emerging year-round farmer's market in the Haymarket district. Nora has been with the Cape Playhouse since 2019 and feels that she has come full-circle since her childhood summers in Eastham. Nora has an MBA and a professional French Culinary Diploma. She is bilingual in English and French and the author of several cookbooks, including the award-winning "Perfect Preserves" and a successful fundraising volume for the UK Pancreatic Research Fund.

THE CAPE PLAYHOUSE

WHERE BROADWAY GOES TO SUMMER. SINCE 1927

UP NEXT...



“A lavish confection of elegance and mystery!” – Broadway World

JULY 16 - AUGUST 2

Embark on an unforgettable journey from the streets of Russia to the dazzling lights of Paris. Follow Anya as she searches for her past, her family, and her destiny. Featuring breathtaking music, stunning choreography, and beautiful songs, this magical adventure will capture your heart!



“A celebration of the best of humankind,”
– Daily Beast

AUGUST 6 - 30

Experience the incredible true story that touched the world. In the days after 9/11, 7,000 stranded travelers landed in the small town of Gander, Newfoundland. There, kindness, compassion and unexpected friendships turned tragedy into hope.

JOAN



“An exhilarating tribute to an icon”
– Fanboy Nation

SEPTEMBER 3 - 20

Get ready for laughs, drama, and the unstoppable wit of a legend! *Joan* brings the iconic Joan Rivers to life, telling the hilarious and moving story of her groundbreaking career, fearless comedy, and fight to stay on top in a male-dominated industry. Bold, brash, and unforgettable —just like Joan herself!

TICKETS AT
CAPEPLAYHOUSE.COM | 508.385.3911

Join us again this season for another sensational production!

THE MORE YOU SEE THE MORE YOU SAVE

Ask us about converting your single ticket purchase to a 3-Show Flex Pass.



Where OUR Stars Meet YOUR Star

Exciting theatrical experiences perfect for the child in your life!

Each event features a performance by a Broadway star from our current mainstage musical and fun-filled theater crafts and games.

Fridays, July 11 to August 29
10:30am in The Cape Playhouse

PERFORMANCE & CRAFT SCHEDULE

July 11: *Rent* – Lights & Sound

July 25: *Anastasia* – Costumes

August 1: *Anastasia* – Props

August 15: *Come From Away* – Scenery

August 22: *Come From Away* – Acting

August 29: *Come From Away* – TBD

THE CAPE PLAYHOUSE

WHERE BROADWAY GOES TO SUMMER. SINCE 1927

820 Main Street, Dennis, MA 02638 | 508.385.3911

CAPEPLAYHOUSE.COM

**CAPE COD
JEWELERS & ARTISANS**
* HYANNIS, MA | EST. 1982 *

FEATURING
EMILY AMEY

WWW.CAPECODJEWELERS.COM



It takes one good dog to change many lives.

Join CAP to train as a therapy team

CAP teams enrich the lives of our neighbors
in hospitals, care facilities, schools
and other community venues.



To learn more, visit our website today.

www.CompanionAnimalProgram.com

Your news on the salty air

Scan code to listen live

ca

90.1 91.1 94.3
Local NPR for the Cape & Islands

Cape Cod 5 is pleased to support The Cape Playhouse

**CAPE
COD 5**

Reach out to us. We're here to help.

www.capecodfive.com
888-225-4636

Member FDIC

Fitness. Health. Training.

TAKE CENTER STAGE IN YOUR BEST SHAPE YET

The newest fitness center in Dennis

rooted
FITNESS • HEALTH • TRAINING
305 Hokum Rock Road, Dennis
rootedcapecod.com

FLEXIBLE MEMBERSHIP OPTIONS!

ER Expertise Meets Urgent Care Convenience

When you need to be seen for a minor illness or injury, we've got you covered.

- High-quality, full-service, walk-in care
- Board-certified ER providers
- Cape-wide access with six locations
- Timely treatment in under an hour for 95% of patients
- Cost-saving care option

View wait times at capecodhealth.org/urgent-care

CAPE COD HEALTHCARE | Urgent Care

Falmouth Harwich Hyannis Sandwich Orleans (seasonal) Osterville (seasonal)

Join us before or after the show at The Pheasant or at our new wine bar, Baleine!

Located just one minute from the Cape Playhouse



Make a reservation at The Pheasant for dinner, open at 5PM

905 Main Street (Route 6A) Dennis, MA

www.pheasantcapecod.com



Stop by Baleine for a pre or post-show drink and a bite—open late!

776 Main Street (Route 6A) Dennis, MA

www.baleinecapecod.com

STEELE ASSOCIATES REAL ESTATE

Trust in your local real estate professional.

Exemplary service since 1987



www.SteeleRealty.com 508.385.7311 ContactUs@SteeleRealty.com
1369-B Route 134 East Dennis, MA 02641



Ross Coppelman
GOLDSMITH

Follow for New Work



508 385 7900 | www.coppelman.com



Ballston Beach, 10 x 12

PACKARD GALLERY II

giclée gallery

www.packardprintgallery.com

(508) 413-9755

email: info@packardprintgallery.com



**"WE ALL CAME FROM THE SEA ...
WE HAVE SALT IN OUR BLOOD,
IN OUR SWEAT, IN OUR TEARS."**

John F. Kennedy

397 Main Street, Hyannis

JFK HYANNIS MUSEUM.ORG

Proudly serving our community.

DOANE BEAL & AMES

South Dennis
508-385-7116

Every Detail Remembered™ | **Dignity®**
MEMORIAL

An Affiliate of Alderwoods Group, LLC/Service Corporation International, 1929 Allen Parkway,
Houston, TX 77019. 713-522-5141.

A Client-Centered Law Practice
Specializing in Estate and Incapacity Planning



SABRINA RAMSEY KANE
ATTORNEY AT LAW

Estate Planning • Special Needs Planning
Probate & Trust Administration

411 Main Street, Building 5, Unit A, Yarmouth Port

508-694-9201 • sabrina@attorneykane.com • attorneykane.com



**Curtain Up...
Your Dream Home!**

Just like a great performance at **The Cape Playhouse**, the perfect home on Cape Cod is all about location, charm, and a touch of magic.

With over **20 years of experience** selling real estate on the Cape—and a lifetime of cherished memories at this beloved theater—I know that finding the right home is more than just a transaction. It's about **setting the stage for your next act**.

Whether you're looking for a cozy beachside retreat, an historic home with character, or a vibrant community to call your own, I'll help you find a place where your story can unfold beautifully.



**BERKSHIRE
HATHAWAY**
HOMESERVICES

**ROBERT PAUL
PROPERTIES**

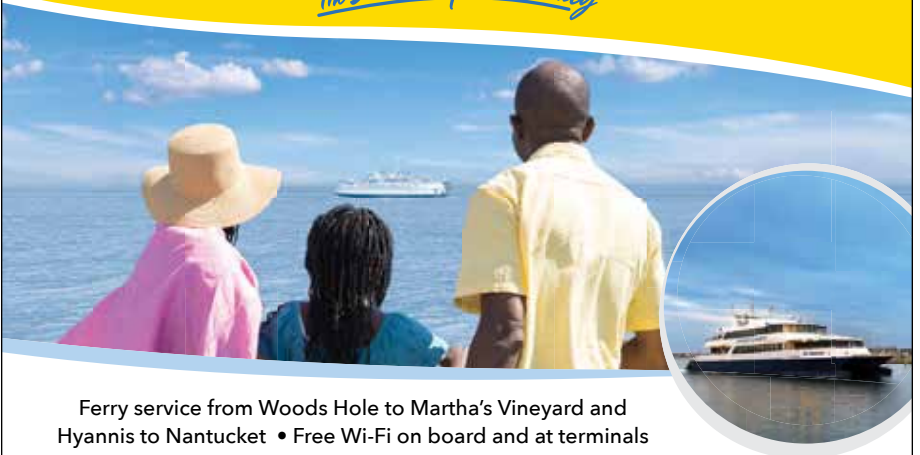


Let's make your next move a standing ovation!

Cindy Harrington REALTOR® ABR® SRS
508-776-8181 • <https://cindyharringtoncapecodre.com/>

Serving the Islands with more
ferries and the lowest fares

The Steamship Authority



Ferry service from Woods Hole to Martha's Vineyard and
Hyannis to Nantucket • Free Wi-Fi on board and at terminals

**Our high-speed ferry gets you to Nantucket in just an hour.
Travel any Monday - Thursday, same day and the round-trip fare is only \$66.**

For safety, schedule, and parking information, go to **SteamshipAuthority.com**

Packard Gallery

418 Commercial Street
Provincetown, MA 02657

Gallery Hours
11AM-4PM and 7PM-9PM Daily

www.packardgallery.com

(508) 487-4690

email: info@packardgallery.com

A.PACKARD

CertaPro Painters®



Your Happiness Matters.

Whether you're reimagining a bedroom or ready to update the entire exterior, your home is our priority. Side to side, top to bottom, inside out, and outside in, CertaPro Painters® is committed to painting every side of life in our community.



10% OFF

Your Next Painting Project*



**PAINT NOW
PAY LATER**



508 / 815 / 3447
cape-cod.certapro.com

**Painting
Happy**

Each CertaPro Painters® business is independently owned and operated. *Offer applies to your residential painting project of \$1,500 or more. Must be presented at time of estimate. Not valid with other offers. Not valid on current estimates or proposals. Available at CertaPro Painters® of Cape Cod. Expires 12/31/25.



It's Your Legacy

You've worked hard to build an array of assets for your loved ones. Let us help you protect them with a solid plan for the future to ensure that your wishes are carried out and family harmony preserved.

Fletcher Tilton administers the region's largest and most respected Trust and Estate Department. And we're here to help. It's Your Legacy.



Frederick M. Misilo, Jr., Esq.

Chair, Trust & Estate Department

1597 Falmouth Road
Centerville, MA
508.459.8059

Fletcher Tilton PC
Attorneys at law

200 YEARS
EST. 1822
★★★★★

WORCESTER | BOSTON | FRAMINGHAM | PROVIDENCE | CAPE COD
508.459.8000 | FLETCHERTILTON.COM

Open Monday – Saturday
Serving dinner from 5pm-9pm
Indoor & Outdoor seating available



Located next door in **Theater Marketplace**
800 Main St. 6A, Dennis
easy walk to the Playhouse

Lobster Doughnut
takeaway @ 10am

For reservations, please visit fincepecod.com
or call **508-385-2096**

WHO'S WHO ON THE STAFF

ADMINISTRATIVE STAFF

Finance Director: Laura Reilly
Executive Assistant: Stephanie Stiles
Executive Apprentice: Frieda Bilezikian
Sales & Guest Services Director: Kirsten Wickson
Marketing Assistant: Connor Nelson

GENERAL MANAGEMENT

General Manager: Brynn Grambow

PUBLIC RELATIONS

National Press Representative: Candi Adams PR

PRODUCTION

Production Manager & Associate Producer:
Ali Farina

Assistant Production Manager: Lucy Barron
Artistic Assistant: Owen Parker

Technical Director: Kristen Garza
Technical Consultant: Bellamy Hassler
Assistant Technical Director: Quinn Kent
Lead Carpenter: Ashley Faulkner
Shop Supervisor: Ethan Gaskell
Scenic Carpenters: Necha Bishop, Polina Vitrouk
Production Swing: Jackson Holsomback

Props Supervisor: Christina Garner
Props Artisan: Sara Mendoza

Resident Scenic Charge: Cris Reverdy
Seasonal Scenic Charge: Helena Gryder

Wardrobe Supervisor: Christian Jones
Lead Dresser: Nat Pagliocco
Dresser: Cole Owen

Lighting Supervisor: Tyler Zickmund
Lead Production Electrician: Audrey Robinson
Electrician: John Barrera
Programmer: Molly Beall
Lighting Rep Plot Designer: Kirk Bookman
Lighting Rep Plot Associate Designer: Sam Saliba

Lighting equipment provided by 512 Productions

Co-Sound Supervisors: Bryce Bienz, Cal Martine
Audio Assistant: Jamnia Ai
Sound Rep Plot Designer: Jeff Sherwood

Company Manager: Shayla Dickerson
Assistant Company Manager: Katherine Neff

Resident Production Assistant: Emma Flanagan
Production Assistants: Julie Cai, Abigail Dorwart
Fly Operator: Marlowe Conway

Musician Coordinator: Jay Daly

STEPHANIE KLAPPER CASTING

Casting Director: Stephanie Klapper, CSA
Casting Assistants: Joe Piserchio, Emma Balk
Assistant SKC: Gracie Guichard

CAPE PLAYHOUSE THEATRE SCHOOL

Education Director: Johanna Stipetic
Associate Director: Mia Caccavaro
Associate Director: Kate Pazakis

PATRON SERVICES

Box Office Manager: Anna Item
Box Office Associates: Echo Chappelle,
Cal Kennedy

Concessions Associates: Henry Ingersol,
Julie Jason, Carly Mentis, Grace Michel,
Kim Moran

Front of House Managers: Deidre Eldredge,
Emma Miles

Front of House Associates:
Danica Bassett, Eva Bogle, Shea Eldredge
Nadine Johnson, Aubrey Woods

Usher Coordinator: Betty Morse

The Cape Playhouse is extremely grateful for the dedication of all the Volunteer Ushers who graciously facilitate the welcoming and seating of our patrons throughout the summer season.

APPRENTICE PROGRAM

For nearly 100 years, the Cape Playhouse has been not just where Broadway goes to summer, but where young artists come to build their careers. Students and early career professionals have always been the heart of the Playhouse, from our extraordinary team in our creative shops to talented emerging leaders in administration to performers getting their first big show to the people running the box office. Spending the summer season at the Cape Playhouse is a very special part of thousands of theater artists' professional journeys.

One group of emerging leaders are part of our formal Apprentice Program, a formal professional development program designed to allow students to experience working in our professional theater, learning alongside their peers and the talented artists and administrators that mentor them. This year, we are taking that partnership to a new level with Sacred Heart University. Sacred Heart provides support for the expenses the Playhouse incurs to house and teach a small and select group of students, and in turn we provide credit-earning experience to these remarkable young people. Our apprentices, interns, and staff interact, learn, create meaningful work for our season, and build relationships that will be essential for their future success.

We rely on your support to keep this tradition growing! Last year, a generous group of donors came together to make sure that the Playhouse's Apprentice Program thrives. If you'd like to consider making a gift to help us sustain and grow this essential part of our season, please contact our Interim Managing Director, Harold Wolpert, at harold@capeplayhouse.com.

This year's apprentices include the following students, and we thank them for their hard work and enthusiasm!

Electrics Apprentice: Anna Allegretti

Props Apprentice: Holly Anderson

Marketing Apprentice: Michelle Cuocci

Scenic Art Apprentice: Bella Ferdinandi

Production Apprentice: Liam Gallary

Production Apprentice: Sophie Hunter

Shop Swing Apprentice: Taber Johnston

General Management Apprentice: Erin Pellegrini

Wardrobe Apprentice: Danielle Toppa

***We're sure you have
better things to do than
stress over printing!***

Trust...



www.sunderlandprinting.com





Now Open in Dennis Village

900 Route 134, Building 3-30
South Dennis, MA 02660

Whether you're dreaming of a stunning renovation, building your ideal home, or need a trusted team to care for your property while you're away—we're here for you.

With years of experience serving Cape Cod homeowners, we bring craftsmanship, care, and local expertise to every project. From whole-home builds to seasonal check-ins, your home is in good hands.

Let's Care for Your Cape Cod Home Together.

We'd love to hear about your vision—stop by our new office or get in touch today.

Call For a Free Consultation
508-619-7909
info@customcraftedcc.com





Bring the children in your life to these delightful shows – featuring the Tanglewood Marionettes, Magic&Beyond with Illusionist David Garrity, and Johnny Peers & the Muttville Comix!

Tickets: \$20 per person

**Wednesdays, July 9 to August 20
9:30am-10:30am in the Cape Cinema**

PERFORMANCE SCHEDULE

July 9: *Magic&Beyond* with David Garrity

July 16: *Hansel & Gretel* – Tanglewood Marionettes

July 23: *Cinderella* – Tanglewood Marionettes

July 30: *Johnny Peers & the Muttville Comix* (outdoor performance)

August 6: *Perseus & Medusa* – Tanglewood Marionettes

August 13: *Sleeping Beauty* – Tanglewood Marionettes

August 20: *An Arabian Adventure* – Tanglewood Marionettes

THE CAPE PLAYHOUSE

WHERE BROADWAY GOES TO SUMMER. SINCE 1927

820 Main Street, Dennis, MA 02638 | 508.385.3911

CAPEPLAYHOUSE.COM

MARK CORTALE PRESENTS

THE TOWN HALL SERIES • 2025

260 COMMERCIAL STREET • PROVINCETOWN



SASHA VELOUR
RUPAUL'S DRAG RACE STAR IN
THE BIG REVEAL
JULY 6TH



CHRISTINE EBERSOLE
TWO TIME TONY AWARD WINNER
W/BILLY STRITCH AT THE PIANO
AUG. 10TH



BILLY STRITCH
AN EVENING WITH
CHRISTINE EBERSOLE
AUG. 10TH



MARILYN MAYE
LEGENDARY CABARET STAR
W/TEDD FIRTH AT THE PIANO
AUG. 24TH



MEGAN MULLALLY
TWO TIME EMMY WINNING
STAR OF WILL & GRACE
AUG. 31ST



JUDY GOLD
STAR OF MY FIRST EX-HUSBAND
AN EVENING WITH MEGAN MULLALLY
AUG. 31ST

For Tickets Visit: www.PtownTownHall.com

TOWN HALL SERIES WILL RAISE FUNDS FOR SANDY HOOK PROMISE



RADIO IS THEATER OF THE MIND.



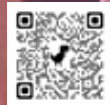
Proud supporters of
THE
CAPE PLAYHOUSE



COXSWAIN MEDIA



Cape Cod's full service digital media company



243 South St., Hyannis MA 02601 • 508-778-6000 • www.CoxswainMedia.com

FROM OUR EXECUTIVE DIRECTOR



Dear Friends of The Cape Playhouse,

Welcome to our 2025 summer season – a Season of Hope – and thank you for joining us at the theatre “where Broadway goes to summer.”

Your presence and support make all the difference. Simply put, the Cape Playhouse could not thrive without the vibrant community that gathers here each year—united by a shared love for live performance and the transformative power of theatre.

Since the close of our 2024 season, we’ve made meaningful progress on several capital improvements planned for completion ahead of the 2026 season. These include the final phase of the winterization of our beloved historic building, addressing critical structural needs, and replacing our original 1927 hemp rigging system with a modern motorized setup—bringing added safety and efficiency for the backstage crew who realize the magic of our spectacular productions. We are deeply grateful to our subscribers, donors, local businesses, the Town of Dennis, and organizations like the Bilezikian Family Foundation, the Forest Foundation, and Mass Cultural Council, whose steadfast support helps us achieve these projects.

As a non profit theatre, we rely on the generosity of our community to help us realize ambitious goals—not only onstage, but across our stunning 22-acre campus. Every contribution, large or small, fuels our ability to preserve this historic gem and ensure the Cape Playhouse remains a quintessential Cape Cod destination for generations to come. Your belief in our mission empowers us to dream bigger, invest boldly, and continue building a vibrant future for American theatre right here in Dennis.

We truly count on your continued support to sustain and grow the creativity, connection, and excellence that define The Cape Playhouse. Together, we’ll keep building a vibrant future for this cherished Cape Cod treasure.

With sincere gratitude,

A handwritten signature in cursive script that reads "Nora".

Nora Carey
Executive Director | Cape Cod Center for the Arts, Inc.

FÊTE & FABLES
Raise a Glass, Raise the Curtain
OUR ANNUAL SUMMER GALA
Sunday, July 27, 2025 | 6 to 9 p.m.
Single tickets: \$200
Sponsor a table:
\$1,500 for a table of 6 | \$2,000 for a table of 8

Join us for an enchanting evening
to benefit The Cape Playhouse
Cocktails
Dinner
Live Auction
and a performance from
ANASTASIA
THE MUSICAL
Celebrate the stories that
bring us together – and help
the next act take the stage

DONOR RECOGNITION

The Cape Playhouse is extremely grateful for the extraordinary generosity of all our donors this past year – and for so many of you, throughout the years! Every gift plays a critical role in bringing professional live theatre to our historic stage and enhancing our educational programs. The individuals and organizations listed on these pages represent the gifts they made between July 28, 2024 and June 4, 2025. Gifts are recognized on a rolling basis until the end of the 2025 production season on September 20th.

GOLD PATRONS | \$25,000 - \$99,999

Linda DeRuvo-Keegan & Kevin Keegan

SILVER PATRONS | \$10,000 - \$24,999

Maureen Arkle & Neil Fitzpatrick,
Nook Foundation

Dick & Beth Currie

Kathryn & Michael Dunford

Linda & Bill Eburn

Linda J. Fisher

The Forest Foundation

The Gildea Family Foundation

Barry Paster & Deirdre Taylor Paster

Patricia Pergola and Robert Rivers

Subak Family Foundation

William & Donna Templeton

Johannes & Regis Lux Worsoe

BRONZE PATRONS | \$5,000 - \$9,999

Anonymous

Frieda Bilezikian

James & Esther Cavanaugh

In Memory of David Bruce Cole, Esq.

D. Stephen Curtis & Patricia M. Connolly

Dennis & Marie Corcoran

Curt & Jean Feuer

Suzy & Jack Genest

George Krouse

Herbert & Dianne Lerner

Patricia Boozang & Thomas Nedell

Patty O'Brien & James White

Redenta & Stephen Picazio

Bill & Erica Scatchard

Bob & Sue Spadaccia

Laura Toy & Louis Duesing

Amy & John Wendell

The White Family Foundation

PREMIER PATRONS | \$2,500 - \$4,999

John & Diane Bujalski

S. Burke

Robert Burns

Rick & Chris Curran

Terri DeConte

David Elsabee & Elaine Gilmore

In memory of Walter & Barbara Korntheuer

Kathleen & Stephen Guillard

Stephen & Kimberly Hawkins

Andrew House

Aileen Johnson

Maryanne & Stephen Knott

Doug & Wendy Kreeger

Judy November

Donna Petersen & Terry Noonan

Jennifer & Daniel Powers

Charles J. Rutz

Gary & Janet Toenniessen

Mary Vrontas

Candice Wroe

Jack & Lees Yunits

SUSTAINING PATRONS | \$1,000 - \$2,499

Anonymous

Walter & Janet Baran

Laura Bologna

John & Elaine Brouillard

In honor of Beverly Locarni Buckley

Phil & Robbie Catchings

Cathy MacNeil-Hollinger & Mark Hollinger

Frank Christian

Eileen Connors

Joseph & Patricia Cusimano

Tom & Doreen Dean

Maureen DeMarco

Glorianne Demoulas

Richard & Susan Dieter

William Dowd

Julia Freedman-Druker

Lucy Duffield Steere

Robert & Jennifer Ewing

William & Elizabeth Flanagan

Marsha A. Fredericks

Gail & Roy Greenwald

John & Meredith Hudson

In Memory of Bill "Bumpa" and Carolyn Holmes

Kapoor Family

John Ippini & Carole Mathieson

Hank & Jeannie King

Joseph & Victoria Klein

Paul & Karen Lacouture

Paul & Donna Laemmle

Cathy G. Lazaroff

Richard Mahoney

Anastasia Marty
RoseMarie & Phil R McLoughlin
Kathleen McNeil
Catherine Milligan
Russ Cox & Sara O'Brien
James & Jamie Pagliocco
Bill E. Perry and Susan M. Perry
Dr. Phillip J. & Janice Peters
Teresa & Mark Plotkin
Margaret R. Rice
Gael Robinson
Robert & Louise Sanborn
Kristina Schaefer
Susan Schofield
Mr. & Mrs. Stephen & Eleanor Shaer
In Memory of Bill Silverstein
Nancy Smith
In Memory of Barbara Tyler
Phil Ware
Mindee Wasserman

SUPPORTING CIRCLE | \$500 - \$999

Anonymous (2)
Mary Ann Albertine & Mark D. Sugermeyer
Carter Giving Fund
Ed & Mary Amabile
Roanne & Joseph Angiello
Laura & Mark Barnard
Jane Barrell
Cheryl Bartlett & Bob Eckel
Abigail Usen Berner
Marilyn Bruneau
Stephen & Deirdre Burke
Kathleen & Thomas Burns
Cameron Family
Jim Coffey
Susan & Ross Coppelman
Joe & Wanda Cornl
Nona Cusick
Mr. & Mrs. George Davagian Jr.
In Memory of Kay DeFord
Timothy Eburn
Robert & Glenda Fishman
Janet Glads
Rob & Margery Glovin
Patricia & James Gonet
Pierre & MaryEllen Guertin
Lisa Hane & Hugh Reinhoff
Holly Gewandter & Nancy Heller
Patricia and Douglas Herron
Lance & Tracy Isham
David & Laura Johnson
Marion Kaiser
Nancy & David Kaplan
Jeffrey Kaufman & Mary Kraft

Karen S. Keirstead
Peter & Janet Kelliher
Gail G. Korten
Julie Kratochvil
Frank Lester
Logan Family
Kathy McDonough
Lynne McGraw
Andrea & James Michaels
Sharon Michie
James & Priscilla Morphy
Lisa & John Motta
Carol & Jack O'Neil
Winfield B. & Linda S. Perry
The Peters Family
John & Kathleen Polanowicz
John & Trish Preston
Mary and Frank Puskar
Michael & Elizabeth Reilly
Jane Remy
Rear Admiral & Mrs. Harold Robinson
Nicholas & Shelley Robinson
Lisa and John Rogol
In Loving Memory of Helen Taylor, Janet Taylor
Spence & Christine Taylor Frazier
Sarah Rothermel
Denise Ryan
Schaeffer Family
John Scarnecchia & Denise D'Agostino
John Squarok & In Memory of John Kochanowski
Joan & Robert Surrette
Theater Marketplace
Schatze & Peter Thorp
Sandra Tripp & Carol Risley
Steve & Peggy Trowbridge
George & Kathy Watson
Sheila Whalen

CONTRIBUTING SUPPORTERS | \$250 - \$499

Anonymous (4)
Andrea Holden Thanksgiving Race
Carolyn Andersen
Susan Barns
Emilie & Rowland Barrett
Cheryl Bartlett & Bob Eckel
In Memory of Penelope Peck
Margaret Baseman
Donald & Virginia Bates
Jim Beall
Jeffrey & Nancy Bilezikian
Dwight, Susan & Raider Blake
Donna Buonopane & Bart Main
Sally & John Burns
John F. & Sally Burns
Peter & Martha Burzycki

In Memory of Patricia Cahill
Karen Campbell
Karen & Steve Campe
Davide & Barbara Carbone
James & Elaine Carter
Lucy & John Carty
Christine & Mike Casper
Casual Gourmet
Amy Celentano
Robert Chisholm
S. Paula Clark
Lynne Connor
Jeffrey Keffer & Suzanne Costello
Emily Degnan
Ronald & Carol Deveaux
John & Becky Diercks
Jennifer DiMola
Alison Doherty
Amy Driscoll
Baird & Pam Eaton
Carol Edelman
Peter & Beth Edelstein
Bob & Jessica Einhorn
Mary Ann Eldred
Chris & Rick Emerson
John & Sandra Ferriter
Bob & Sarah Fishback
Barry Foss & Molly Forbush
Stephen Galvin
Deborah Gavron
Garrett Gillespie
Amy Lindeman Gouger
Karen & Steve Graziano
Frances Haidas
Deb & Sam Haines Family
Mr. & Mrs. Hall
Mary Hamilton
Cindy Harrington
David & Martha Healey
Barbara Healey
John & Sheila Hicinbothem
The Hildebrandts
Robert & Carolyn Howard
Martha & Robert Johnson
Linda & Jim Johnson
Marjorie Wallens & Richard Johnston
Gibran Kafal
Margo Kay
Mary Ellen Kilmer
Mr. & Mrs. Robert Kirschner, Jr
Jody & Lew Klessel
Chris & Patty Koehler
Ginny & Paul Kula
Michele & James Kyrimes
Peter & Catherine Lawler
Janice & David Lawrence

Steven Lerner & Marcia Franklin Lerner
Mary Lewis
Meribeth Locke
Stephen A. Lovelette
Richard Maitland
In Memory of Tim McCarthy
Christine McCartney
1762
Jim & Barbara McDowell
Joan McGrath and Susan Nash
Jane W. McIntosh
David & Tammy McLean
Thomas & Susan McNeice
Lynn & Lou Meyer
Hannelore & John Meyer
Louise Miller
In Merry Memory of Florence and James Mooney
Regina Mullen
Barbara & William Myslinski
New Image Hair Salon
Barrett Nichols
Leslie & Stuart Nickerson
Bob & Barbara Nickerson
Cherie Nixon
Tracy O'Leary, Realtor Keller Williams Cape Cod
and Colonial Partners
Josh Palmer, Life Through You LLC
Judy & Jonathan Parkhurst
Steven & Kimberley Pearson
Steele Associates Real Estate
Margaret Polski
Daniel & Jennifer Powers
Kathy and David Ready
Joe & Eileen Redmond
Shelley Redstone
James Wright & Karen Reed-Wright
John & Lyn Rice
Sandra Tripp & Carol Risley
Richard & Priscilla Roberti
Robert Salmon & Lisa Kightlinger
Peter & Anne Schleicher
Steve & Sue Schwarm
Kevin & Mary Seifert
Patricia Semple
Frank & Faith Shannon
Harriett Hackford
Maureen Shea
Dwight & Lucy Shepard
Silva Accounting Professionals, Inc
Linda Snetselaar
Robert Stager
Ruth Sternberg
Dan & Laura Stone
The Subak Family
Roger & Kathy Sullivan
Liz Sullivan

Janet Testa
 Brian & Veronica Tracey
 Patricia Toland
 Beth Tracy & Christopher Dalrymple
 Cliff & Pam Vacirca
 Scott & Amy Vandersall
 Annie Walker
 Paul & Jennifer Donahue
 Theresa Whelan
 Laura Winston

FRIENDS (\$125 - \$249)

Anonymous (7)
 Bud & Gina Anderson
 Michael Athanasoulas
 Karen & Bill Bailey
 Susan Basic
 Baskin's Ace Hardware
 Paul Beaton
 Laurie Borst
 Blandine Brais
 Captain & Mrs. R. W. Breault, Jr.
 Jo & Art Brisbane
 Bob E. Brodeur
 Lisa Bronson
 Bill & Cathy Brown
 Patricia Burke

John F. Burns, II
 In Memory of Peter McDowell
 Rita & Bob Campanella
 In honor of Ed & Mary Amabile
 Martha & Paul Chrestensen
 Karen Clark
 Thomas & Nancy Connelly
 Jack Connors
 Pam & Chris Delaney
 Alison Doherty
 Mady & Bruce Donoff
 Kelly M. Douglas
 Janet & George Drummey
 William and Ellen Dyke
 Melody Fadness
 Geraldine Fahey
 Wayne Farwell
 Ann Marie Feeney
 Sharon Foster & Shawn Gilmore
 Elaine Fleming
 Kent & Allison Frederick
 Frank & Martha French
 Betsy, George & Alyssa Gardner
 Patricia Geary
 Ginny Gilbert
 Judith Godin
 Michael Goldberg

**Supporting artists
 today & always**



We're committed to shining a light on
 The Cape Playhouse's mission to inspire,
 entertain and educate our community.



mycapecodbank.com
 508.568.3400

Member FDIC • Member DIF
 Equal Housing Lender



Our pies on your dinner table
 will take center stage!



CENTERVILLE • SANDWICH

BECOME A MEMBER

Get in on the act and become a Cape Playhouse member! Enjoy the associated perks and show your support for the theatre. Membership benefits for the 2024 Season are valid for a household and are calculated by your total donations made between July 29, 2024 and September 20, 2025.

Contribute today to ensure the legacy of the Cape Playhouse as
“America’s Favorite Summer Theatre.”

YOUR MEMBERSHIP SUPPORTS:

- The production of Broadway-caliber performances on our historic stage
- The development of our Children’s Programs
- The preservation and maintenance of our buildings and campus grounds

DONOR LEVELS & BENEFITS	FRIEND \$125+	<ul style="list-style-type: none"> • Unlimited free ticket exchanges • Recognition in all printed programs
	CONTRIBUTING SUPPORTER \$250+	<ul style="list-style-type: none"> • Friend Benefits • 10% discount on shop merchandise
	SUPPORTING CIRCLE \$500+	<ul style="list-style-type: none"> • Contributing Supporter Benefits • Invitations to Technical Rehearsals • One invitation to one Meet and Greet Cocktail Party
	SUSTAINING PATRON \$1,000+ <i>\$50 Non-Deductible Amount</i>	<ul style="list-style-type: none"> • Supporting Circle Benefits • Two invitations to one Meet and Greet Cocktail Party
	PREMIER PATRON \$2,500+ <i>\$210 Non-Deductible Amount</i>	<ul style="list-style-type: none"> • Supporting Circle Benefits • Two invitations to two Meet and Greet Cocktail Parties • Introduce a friend to the Playhouse with two complimentary show tickets
	BRONZE \$5,000+ <i>\$590 Non-Deductible Amount</i>	<ul style="list-style-type: none"> • Supporting Circle Benefits • Two invitations to three Meet and Greet Cocktail Parties • Introduce a friend to the Playhouse with four complimentary show tickets • Give four show tickets to a non-profit or school of your choice
	SILVER \$10,000+ <i>\$810 Non-Deductible Amount</i>	<ul style="list-style-type: none"> • Supporting Circle Benefits • Two invitations to three Meet and Greet Cocktail Parties • Introduce a friend to the Playhouse with six complimentary show tickets • Give six show tickets to a non-profit or school of your choice
	GOLD \$25,000+ <i>\$1,140 Non-Deductible Amount</i>	<ul style="list-style-type: none"> • Supporting Circle Benefits • Two invitations to three Meet and Greet Cocktail Parties • Introduce a friend to the Playhouse with eight complimentary show tickets • Give ten tickets to a non-profit or school of your choice

For gifts of **\$50,000 and above**, the Development Department will contact you to customize your benefits.

Jon & Deborah Buxton Goldberg
Bess & Gregory Goldstein
Martha Gowetski
Ralph & Dianne Grapentine
Christine & William Jr. Greene
Mavis Grorud
Kristin Hatch
Dan & Diane Hayden
Liz & Jim Hester
Sarah & Frank Hewitt
Lee & Kim Hicks
Felicia Holden
Lisa Houh
Janine & Paul Jacobs
Anne Jacobson
Tim & Mary Grace Jacou
Gail H. Jamison
Paula Kane
Sally Kelly
Dr. Todd & Martha Kelshaw
Alicia Knoff
Maryann Knowles
Michael A. Kovner
Lorna Larson
Tryon Lecakes
Robert Sherman & Joan Lenington
John F Paolini and Eva M. Lepisto
Barbara Litwin
Donna Jean Martell
Janet Marticke
Cheryl Martin
Meg & Sonny Massaro
Eileen McCarthy
Anne Marie, Terrence, & Brendan McCarthy
Diane M. McDonald
Thomas McDonough
Jim & Melissa McLaughlin
Robin Mosle
Inge Mulvaney
Angel Negron

In Memory of Joe & Dunna Oliva
Alan Onstad
Paul & Dawn Orvis
Debbie Owen
Barbara Paddock
Gary Parese
Lucille Pascale
Richard & Rose Pears
Geraldine Pelczar
Joan Perera
Jim & Susan Pergamo
Scott Petersen
Mark & Terry Petracca
Mark J Powers
David & Mary Reynolds
Tom & Karen Rezendes
Dan Richards
Eric Rosen
Jon Rosenfeld
Scott Rosenthal
Don & Mary Lou Schwinn
Frank Shealey & Diane Stephens
Elizabeth Speed
Connie & John Stather
Laura Stone
Joan Stout
In memory of Bill Tyler from the Thorp Family
James P. & Linda M. Urbas
In Memory of Peter McDowell
Paul & Sally Warren
Michael Watts
Louis & Rosalyn Weisz
Jim West
Arnold Wishner
Anne M. Yount & Robert S. Grimes
Deanna Zikias

We apologize in advance for any error or omission in our acknowledgment recognitions. Please contact our Box Office staff or email info@capeplayhouse.com with any corrections.

THANK YOU

Walpole
Outdoors™



Live Outside Expectations

A legacy of craftsmanship
and innovation in outdoor design.

WalpoleOutdoors.com

958 East Falmouth Highway, East Falmouth, MA 02536
(508) 392-5575



THE CAPE PLAYHOUSE THEATRE SCHOOL

THE ULTIMATE SUMMER EXPERIENCE FOR 6 - 16 YEAR OLDS!

Whether your child already loves performing, musical theatre, drama, song and dance – or would like to discover this amazing world – this is the summer school for them. Each course is themed – following a popular Broadway show and is designed for children to build confidence, have fun while learning, make friends for life, and create memories that last forever!

Duration: Each course lasts one or two weeks, excluding weekends

Daily Hours: 9:30 am to 3:30 pm

Classes are limited to 25 students per session.

GROUP A: AGES 6 TO 9

SOLD OUT

Disney's **THE ARISTOCATS**
July 7-18

Magic Tree House's **PIRATES PAST NOON**
July 21-August 1

Disney's **THE JUNGLE BOOK**
August 4-15

GROUP A: AGES 6 TO 9

THE MUSIC MAN | July 7-11

ANASTASIA | July 14-25

SOLD OUT

THE WIZARD OF OZ
July 28-August 8

Disney's **13** | August 11-22



ENROLL TODAY at CAPEPLAYHOUSE.COM

or call 508.385.3838 | 10% sibling discount available

CORPORATE, FOUNDATION & GOVERNMENT FUNDERS

The Cape Playhouse is grateful to receive support from a wide range of corporations, foundations, and government agencies that support our annual operations and campus renovations.

SEASON PRESENTER

CONCERT SERIES PRESENTER



CORPORATE



FOUNDATIONS



The Forest Foundation



GOVERNMENT FUNDERS



Community Preservation Committee



Community Preservation Committee



For more information about sponsorship opportunities, please contact Stephanie Stiles at stephanie@capeplayhouse.com or 508.385.3838.

THINGS TO KNOW

EMERGENCY EVACUATION

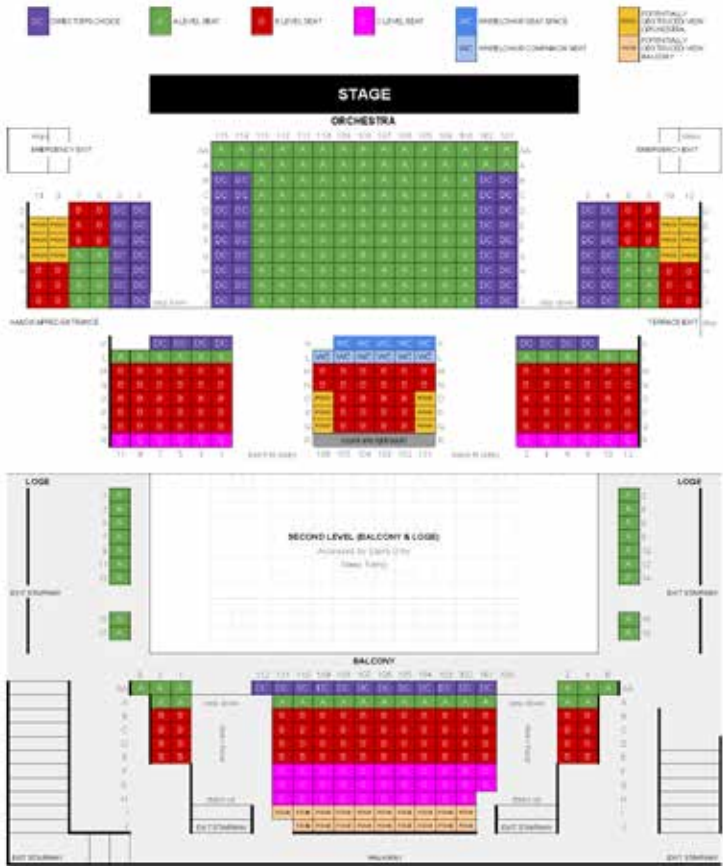
In addition to the Lobby exit, there are additional emergency EXITS as indicated on the house map.

HEARING EQUIPMENT

Assisted listening devices are available from the house manager.

CAMERAS

The use of cameras and recording devices is strictly prohibited in the theatre during performances.



CONTACT INFORMATION

- Box Office: 508.385.3911
- Website: CapePlayhouse.com
- Administrative Offices: 508.385.3838

BOX OFFICE HOURS

- Monday-Saturday from 11am to 5pm
- During performances, the Box Office will remain open through intermission.

CONCESSIONS

When snacks and drinks are available before the performance and during intermission, we kindly request that you refrain from eating and drinking in the theatre.

BABES IN ARMS

Children must have a ticket. Children under the age of five are not permitted in the theatre.

WHEELCHAIR ACCESSIBILITY

The Playhouse is accessible by ramp and can accommodate both wheelchair and companion seating in the orchestra section. Please notify us when you purchase your tickets if wheelchair accommodations are required.

RESTROOMS

The women's restroom is located through the Lobby. The men's restroom and an individual handicapped accessible restroom are located in the hallway through the handicapped entrance.

Josh

JOSH CELLARS

**"MAKING WELL-BALANCED
WINE TAKES HARD WORK,
BUT MY DAD WOULDN'T HAVE
HAD IT ANY OTHER WAY."**

Joseph & Co.

FOUNDER, JOSH CELLARS



SUPPLYING EXCELLENCE FOR GENERATIONS



VISIT OUR WINDOW
& DOOR SHOWROOM

243 Main St 6A
Dennis, MA
508.595.8801